

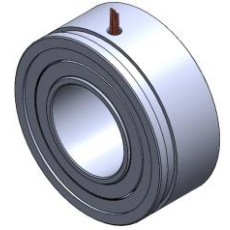


MYM SERIES RESOLVERS

MYM-31

Features:

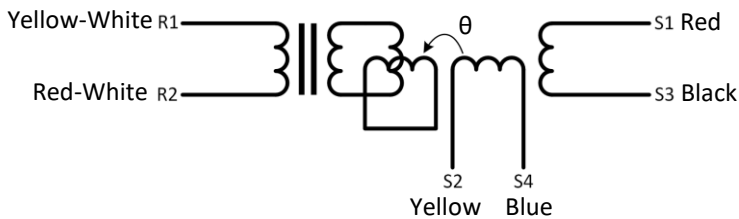
- Hollow shaft ID: 38 mm
- Outer diameter: 77.5 mm
- Length: 31.8 mm



ELECTRICAL DATA

MDS.MYM-31	
Primary Side	R1-R2
Pole pairs	1
Transformation ratio	0.5±10%
Input Voltage	5 Vrms
Input Current	36 mA
Input frequency	10 kHz
Phase shift	3° ± 2°
Null Voltage	20mVmax
Zro	66+140j Ω
Zrs	62+132j Ω
Zso	230+620jΩ
Zss	215+600j Ω
R1-R2 DC resistance	39.5 Ω ± 10% (@20°C)
Stator DC resistance	77.5 Ω ± 10% (@20°C)
Accuracy	±7'
Operating temp.	-50°C / +110°C

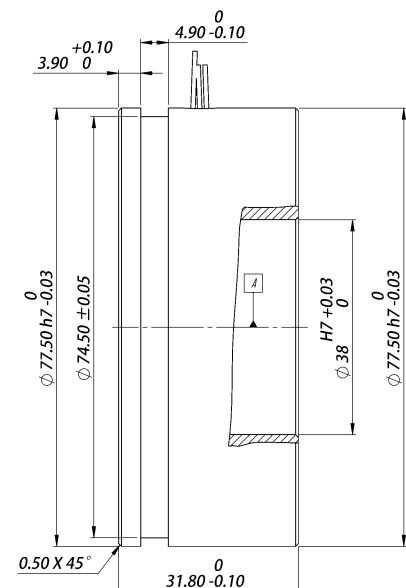
SCHEMATIC and TECHNICAL DRAWINGS



Input: $E(R1-R2) = E \sin(\omega t)$

Output: $E(S1-S3) = Tr \times E(R1-R2) \cos\theta$
 $E(S2-S4) = Tr \times E(R1-R2) \sin\theta$

Tr: Transformation ratio



Rev-2 | 16.01.2024 | O. Simsek | Tek.sayfa.yzpldts