

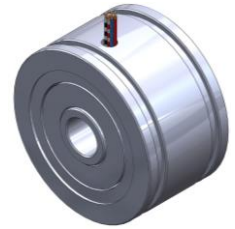


MYM SERIES RESOLVERS

MYM-15

Features:

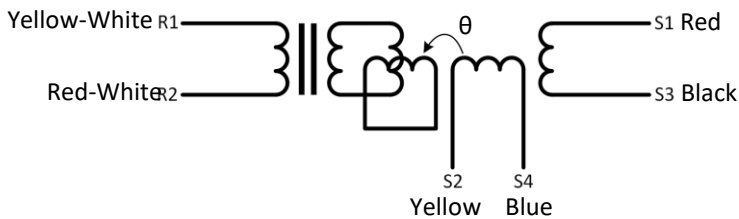
- Hollow shaft ID: 8 mm
- Outer diameter: 36.8 mm
- Length: 21.3 mm



ELECTRICAL DATA

MDS.MYM-15	
Primary Side	R1-R2
Pole pairs	1
Transformation ratio	0.5±10%
Input Voltage	5 Vrms
Input Current	58 mA
Input frequency	4.5 kHz
Phase shift	-14° ± 2°
Null Voltage	30mVmax
Zro	55+80j Ω
Zrs	50+75j Ω
Zso	195+390jΩ
Zss	190+360j Ω
R1-R2 DC resistance	42 Ω ± 10% (@20°C)
Stator DC resistance	76 Ω ± 10% (@20°C)
Accuracy	±10'
Operating temp.	-50°C / +110°C

SCHEMATIC and TECHNICAL DRAWINGS



Input: $E(R1-R2) = E \sin(\omega t)$

Output: $E(S1-S3) = Tr \times E(R1-R2) \cos\theta$
 $E(S2-S4) = Tr \times E(R1-R2) \sin\theta$

Tr: Transformation ratio

