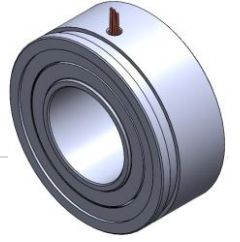


MYM-31 Technical Information

Features

- Hollow shaft ID: 38 mm
- Outer diameter: 77.5 mm
- Length: 31.8 mm

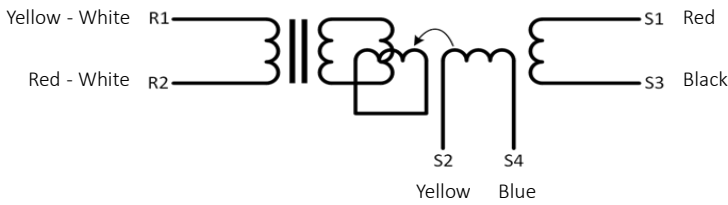


MYM-31 Electrical Data

MDS.MYM-31

Primary Side	R ₁ -R ₂
Pole pairs	1
Transformation ratio	0.5±10%
Input Voltage	5 Vrms
Input Current	36 mA
Input frequency	10 kHz
Phase shift	4° ± 2°
Null Voltage	20mVmax
Zro	66+140j Ω
Zrs	62+132j Ω
Zso	230+620jΩ
Zss	215+600j Ω
R1-R2 DC resistance	39.5 Ω ± 10% (@20°C)
Stator DC resistance	77.5 Ω ± 10% (@20°C)
Accuracy	±7'
Operating temp.	-50°C / +110°C

MYM-31 Schematic and Technical Drawings



Input: $E(R_1-R_2) = E \sin(\omega t)$

Output: $E(S_1-S_3) = Tr \times E(R_1-R_2) \cos\theta$
 $E(S_2-S_4) = Tr \times E(R_1-R_2) \sin\theta$

T_r: Transformation ratio

