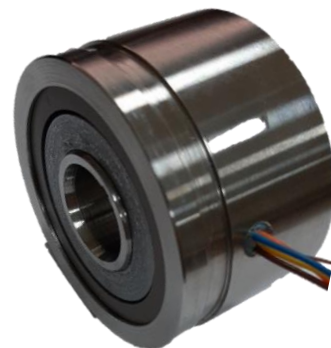




**MYM Series Resolvers**

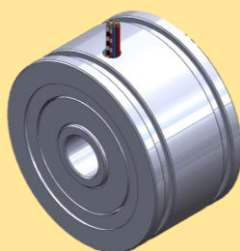
MYM series resolvers present options in different inner and outer diameters, different axial lengths and different operating frequencies. Resolvers can be easily mounted for servomotors, direct-drive rotary stages, robotic joints, and actuator applications in different industries due to their robust and durable designs.

MYM series resolvers are the perfect choice for applications that operate in conditions involving extreme temperature, high vibration and dirty environments.



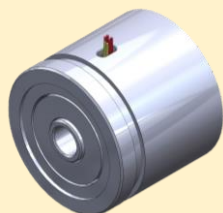
**MYM-08**

- Hollow shaft ID: 4 mm
- Outer diameter: 20.3 mm
- Length: 18 mm
- Input: 7 Vrms – 10 kHz

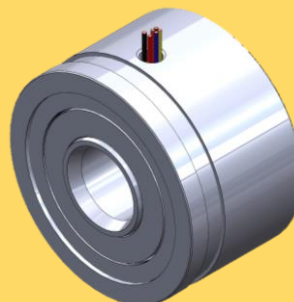


**MYM-15**

- Hollow shaft ID: 8 mm
- Outer diameter: 36.8 mm
- Length: 21.3 mm
- Input: 5 Vrms – 4.5 kHz



**MYM Series Resolvers**



**MYM-21**

- Hollow shaft ID: 17 mm
- Outer diameter: 52.4 mm
- Length: 31.75 mm
- Input: 4 Vrms – 5 kHz

**MYM-27**

- Hollow shaft ID: 22 mm
- Outer diameter: 72 mm
- Length: 35.5 mm
- Input: 7 Vrms – 8 kHz



**Applications**



Aerospace



Machine tools



Oil industry



Defense



Laser cutting



Robotics



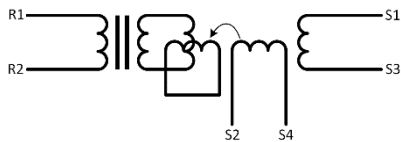
Milling Heads



Medical



## MYM Series Resolver Data



**R1&R2:** Yellow-White and Red-White  
**S1&S3:** Red and Black  
**S2&S4:** Yellow and Blue

**Input:**  $E(R1-R2) = E \sin(\omega t)$

**Output:**  $E(S1-S3) = Tr \times E(R1-R2) \cos\theta$

$E(S2-S4) = Tr \times E(R1-R2) \sin\theta$

Tr: Transformation ratio

	MYM-08	MYM-15	MYM-21	MYM-27
Primary Side	R1-R2			
Pole pairs	1			
Transformation ratio	0.5±10%			
Input Voltage	7 Vrms	5 Vrms	4 Vrms	7 Vrms
Input Current	50 mA	30 mA	23 mA	44 mA
Input frequency	10 kHz	4.5 kHz	5 kHz	8 kHz
Phase shift	$-10^\circ \pm 2^\circ$	$-8^\circ \pm 2^\circ$	$-9^\circ \pm 2^\circ$	$-17^\circ \pm 2^\circ$
Null Voltage	30mVmax			

## Main Features & Benefits

- 4 resolver sizes
- Different frequency operations for each size
- Provide accurate, absolute position feedback
- High reliability
- Wide temperature range (-50°C / +100°C)
- Rugged design resistant against electrical noise, shock, high acceleration, vibration, pressure and vacuum
- High speed rotation
- Possible multi-speed design
- Brushless, lightweight devices consuming little power

**MYM SERIES RESOLVERS**

**MYM-15**

**FEATURES:**

- Hollow shaft ID: 8 mm
- Outer diameter: 36.8 mm
- Length: 21.3 mm

**ELECTRICAL DATA**

Primary Side	
Pole pair	
Tranof	
Input	
Input I	
Phase shift	
Null Volt	
Zrs	
Zrs	
Zrs	
Zrs	
R1-R2 DC resistance	30 Ω
Stator DC resistance	98.8 Ω @ 8 V
Accuracy	±10°
Operating temp.	-50°C-110°C

MDS Motor Ltd.  
E-mail: [info@mdsmotor.com](mailto:info@mdsmotor.com) Website: [www.mdsmotor.com](http://www.mdsmotor.com)

Detailed technical datasheets are available upon request.

